

EG-Baumusterprüfbescheinigung

gemäß Europäischer Richtlinie für Aufzüge 95/16/EG

Certificate of EC-Type Examination

according European Directive for Lifts 95/16/EC

Produkt / Product: Verriegelungseinrichtung für waagrecht bewegte Schachtschiebetüren
Landing door locking device for horizontally sliding doors

Typ / Type: AMDL1-R6

Antragsdatum / Date of application:
10.09.2010

Bescheinigungsnummer / Certificate number:
TÜV-A-AT-1/09/049 CETV/1

Zugelassene Stelle / Approved body:
TÜV AUSTRIA SERVICES GMBH
Krugerstraße 16
A-1015 Wien
ID-Nr.: 0408

Bescheinigungsinhaber / Certificate holder:
KONE Corporation
Kartanontie 1
FIN-00330 Helsinki
FINLAND

Prüfstelle / Test laboratory:
TÜV AUSTRIA SERVICES GMBH
Krugerstraße 16
A-1015 Wien

Hersteller / Manufacturer:
WITTUR GesmbH
Sowitschstrasse 1
A-3270 Scheibbs

Prüfgrundlage:
Basis of examination:
Lift Directive 95/16/EC
EN81-1:1998
EN81-2:1998

Datum und Nummer des Prüfprotokolls:
Date and number of laboratory report:
2010-AT-EP/0136, 01.12.2010

Bemerkungen: Das geprüfte Produkt erfüllt die Prüfgrundlagen im Rahmen des im Anhang 1 dieser Bescheinigung definierten Anwendungsbereichs.
Remarks: *The product fulfils the base of examination in the scope of application, defined in the annex 1 of this certificate.*

Verbreitung dieser Bescheinigung nur im Ganzen mit Anhang 1 und darin angeführten Unterlagen.
Spread of this certificate allowed complete only with appendix 1 and documents called there.



02.12.2010
Ausstellungsdatum
Date of issue

Ing. Werner SCHMIDT
Zertifizierungsstelle
Certifying Department

Anhang zur EG-Baumusterprüfbescheinigung
Annex to Certificate of EC-Type Examination
N°TÜV-A-AT-1/09/049 CETV/1

TÜV AUSTRIA SERVICES GMBH

Notified Body 0408

Anhang zur / *Annex to*
EG-Baumusterprüfbescheinigung *Certificate of EC-Type Examination*
TÜV-A-AT-1/09/049 CETV/1

Wien, 01.10.2010

Dieser Anhang wurde erstellt in: Deutsch / German
This annex has been issued in: Englisch / English

Auszugsweise Vervielfältigung nur mit Genehmigung der TÜV AUSTRIA SERVICES GMBH gestattet
Duplication of this document in parts is subject to the approval TÜV AUSTRIA SERVICES GMBH

Anhang zur EG-Baumusterprüfbescheinigung
Annex to Certificate of EC-Type Examination
N°TÜV-A-AT-1/09/049 CETV/1

1. Anwendungsbereich / Scope of application:

- a.) Art und Verwendungsbereich des Türverschlusses
Type and scope of use of the door locking device

Verriegelungseinrichtung, Typ AMDL1-R6, mit Hakenriegel für waagrecht bewegte, mittig öffnende, zweiblättrige Schacht-Schiebetüren mit maschineller Betätigung.
Door locking device type AMDL1-R6 with lock hook for horizontally moving, centre opening, two panel, power operated landing sliding door.

- b.) Zulässige Türabmessungen
Allowed door dimensions

lichte Türbreite <i>door width</i>	lichte Türhöhe <i>door height</i>	max. Masse eines Türblattes <i>max. mass single door panel</i>
700 mm – 1300 mm	1900 mm – 2400 mm	45 kg

- c.) Nennwerte der elektrischen Sicherheitseinrichtungen
Nominal value of the electrical safety components

Wechselstrom 230 V / 2A
Alternating current
 Kurzbeschreibung
Short description

2. Bedingungen und Voraussetzungen / Conditions and Preconditions:

Keine / None

3. Anmerkungen und Hinweise / Remarks and advices:

Die Schachttürverriegelung kann als Ersatz für die Schachttürverriegelung mit folgenden Zertifikatsnummern verwendet werden:
The locking device for landing doors can be used as replacement for locking devices with following license numbers:

TÜV-A-AT-1/09/049 CETV

4. Bilder, Diagramme, Skizzen / Pictures, diagrams, sketches:

Keine / None

Anhang zur EG-Baumusterprüfbescheinigung
Annex to Certificate of EC-Type Examination
N°TÜV-A-AT-1/09/049 CETV/1

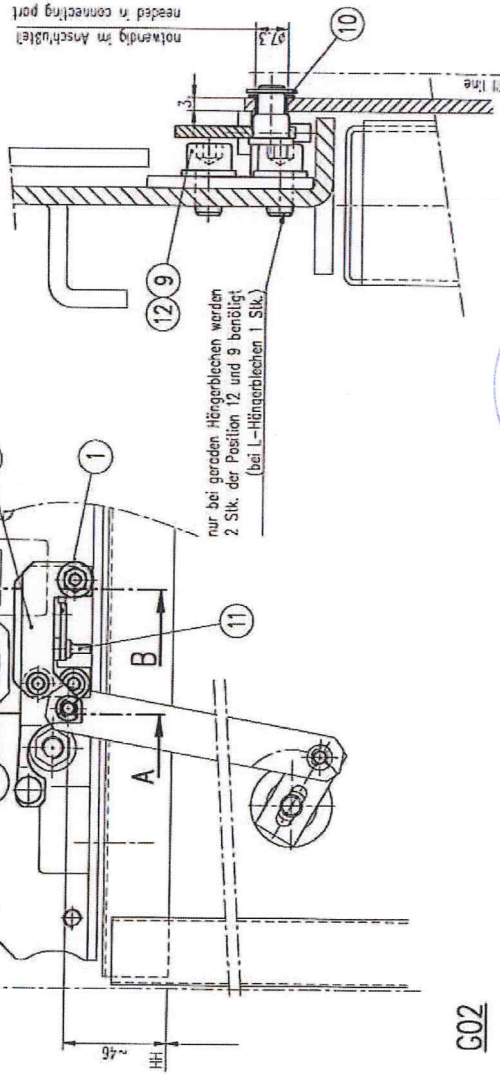
5. Anlagen / Attachments:

Zeichnung, landing top track complete, 606971 vom 08.10.2010 (Ausgabe B)
Zeichnung, basic landing door lock, 601029 vom 21.09.2009 (Ausgabe M)
Zeichnung, basic landing door lock, 601023 vom 21.09.2009 (Ausgabe N)
Zeichnung, emergency opening, 601080 vom 31.05.2007 (Ausgabe C)
Zeichnung, emergency opening device, 601590 vom 03.03.1999

Original No.	601000	601005	601006	601007	601010
Included in	601014	601550	604539	602819-...#23	605590
Approval					
Modification					
Part					
Order					

602835/045	603483	603520	604470/480	604488/490
604533/534	604680-...663	604792	604803/807	604871

Schnitt A-A
section A-A
2:1



G01

G02



TUV-A-AT-1091049 CETV1

2.12.2010

Position nicht belegt:
position not used:

4 7

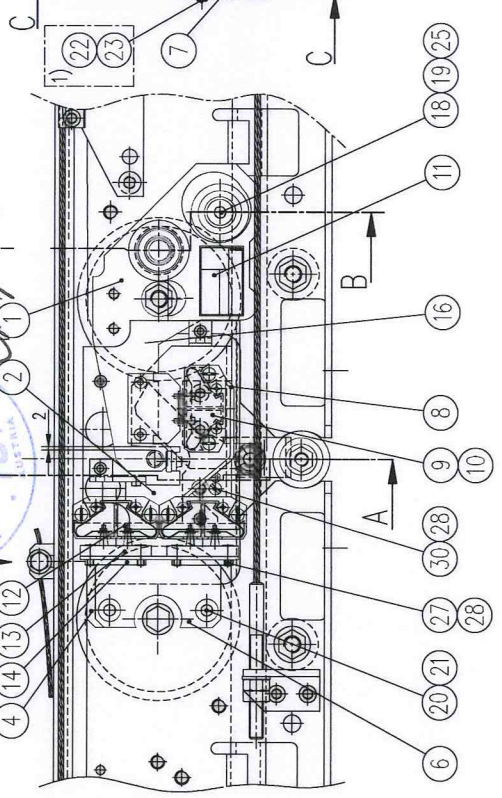
Item No.	Item Name	Material	Quantity
2	H12	Führschicht DIN/500-E-M6x0-8.8-A5C	
1	H11	Gummianschlag N936/1	
1	H10	Sicherungschraube DIN5799-5	
2	2	2598449 Contactschraube 06-550612-32/Normel	
1	H08	1968116 SK1-Mutter DIN965-M6-B-A5C	
1	H07		
1	H06	245429 Schraube DIN125-6.4-A3C	
1	H05	273791 Einpred-Gewindbolzen FH-M6-25	
1	H04		
1	H03	601592 G02	
1	H02	601592 G01	
1	H01	601594 H01	
2	G02	G02	

AVDL left	AVDL right
Design	Design
Item	Item
Type	Type
Scale	Scale
Material	Material
Quantity	Quantity
Manufacturer	Manufacturer
Part No.	Part No.
Order No.	Order No.
Drawn	Drawn
Checked	Checked
Date	Date
03.01.1998	
emergency opening device	
Notentriegelung	
panel version R2	
601590	

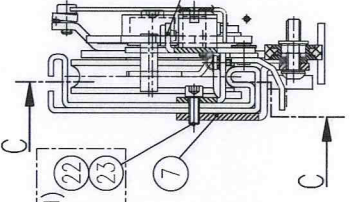
ORIGINAL

TAV-A-AT-1/09/049 CETV/1

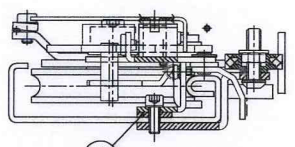
G01/G11/G21
gezeichnet: Standard
drawn: standard



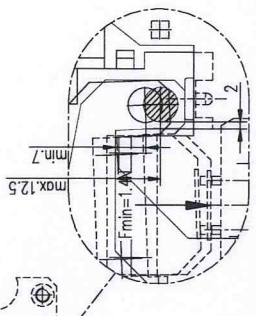
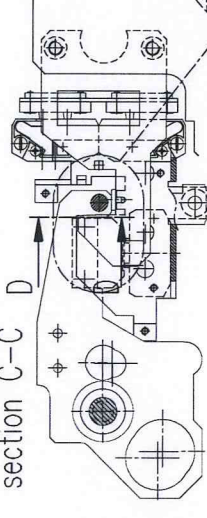
Schnitt A-A
section A-A
AMD R2



Schnitt A-A
section A-A
AMD R6



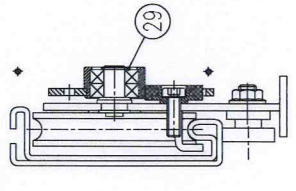
Schnitt C-C
section C-C



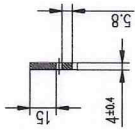
1) optional 983583 thread rolling screw with ratchets ~DIN 7500-EE-M6x16

G02/G12/G22

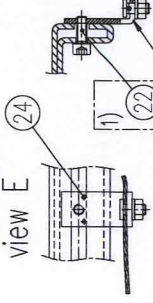
Schnitt B-B
section B-B



Schnitt D-D
section D-D
min. hook cross section
A = 74,8mm²



Ansicht E
view E



listed in 601113

contact plug	G12	601070 G08
Version	G11	601070 G07
standard	G02/G22	601070 G02
	G01/G21	601070 G01
	VAR. LATCH	

H12 VAR. DOOR CONTACT	274093	SEL1-A1Z P	280102	SEL4-A1Z P
H10 VAR. DOOR CONTACT	AZ06T spez.2158	274095	SEL2-A1Z P	280701
H09 VAR. DOOR CONTACT	AZ05K1 spez.1697	274099	SEL2-A1Z PL	280099
H08 VAR. CABLE BRIDGE	601110 H01		601110 H04	Bernstein
	Schmersal	Bernstein		Bernstein

Relevant zu included in	601000	601006	601010	601550
Änderung Index Appar	G21 & G22 added			
Datum Date	21.09.2009			
Gerechnt Dim	wa/mtd			
Bepr. Cnd	CR-012202			

Konstr. Design	Bezeichnung Name	Typ Item	Material Material	Qualität Quality	Teil Part	Typ Type	Bezeichnung Name	Code Code	AMD	Bezeichnung Name	Code Code	AMD
H30	1	1	1	1	1	1	1	1	1	1	1	1
H29	1	1	1	1	1	1	1	1	1	1	1	1
H28	6	6	6	6	6	6	6	6	6	6	6	6
H27	4	4	4	4	4	4	4	4	4	4	4	4
H26	1	1	1	1	1	1	1	1	1	1	1	1
H25	2	2	2	2	2	2	2	2	2	2	2	2
H24	3	3	3	3	3	3	3	3	3	3	3	3
H23	4	4	4	4	4	4	4	4	4	4	4	4
H22	2	2	2	2	2	2	2	2	2	2	2	2
H21	2	2	2	2	2	2	2	2	2	2	2	2
H20	1	1	1	1	1	1	1	1	1	1	1	1
H19	1	1	1	1	1	1	1	1	1	1	1	1
H18	1	1	1	1	1	1	1	1	1	1	1	1
H17	1	1	1	1	1	1	1	1	1	1	1	1
H16	1	1	1	1	1	1	1	1	1	1	1	1
H15	1	1	1	1	1	1	1	1	1	1	1	1
H14	2	2	2	2	2	2	2	2	2	2	2	2
H13	2	2	2	2	2	2	2	2	2	2	2	2
H12	2	2	2	2	2	2	2	2	2	2	2	2
H11	1	1	1	1	1	1	1	1	1	1	1	1
H10	1	1	1	1	1	1	1	1	1	1	1	1
H09	1	1	1	1	1	1	1	1	1	1	1	1
H08	1	1	1	1	1	1	1	1	1	1	1	1
H07	1	1	1	1	1	1	1	1	1	1	1	1
H06	1	1	1	1	1	1	1	1	1	1	1	1
H05	1	1	1	1	1	1	1	1	1	1	1	1
H04	1	1	1	1	1	1	1	1	1	1	1	1
H03	1	1	1	1	1	1	1	1	1	1	1	1
H02	1	1	1	1	1	1	1	1	1	1	1	1
H01	1	1	1	1	1	1	1	1	1	1	1	1
G22	G21	G12	G11	G02	G01							
AMD	1/3/5	left	right	left	right							
standard	Rolling 6	contact plug	Version- R2	standard	Rolling 2							

KONE

601023

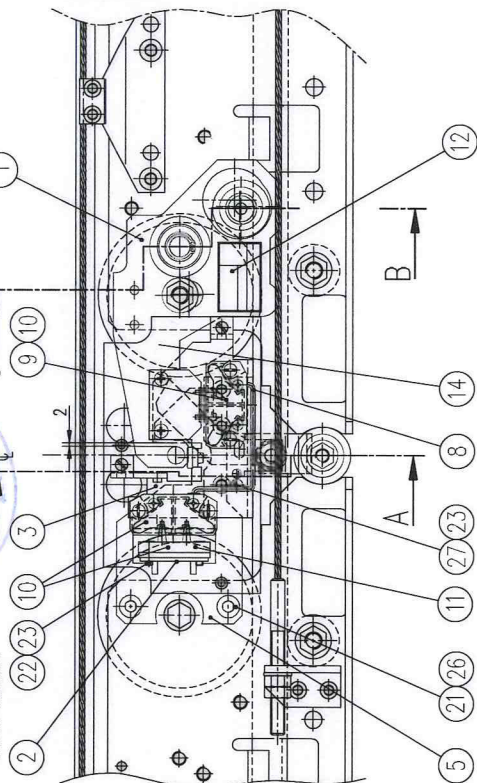
basic landing door lock
Basis Schachttürschloß
DOM-Option for centre opening types

TUV-A-AT-1109/049 CETV/1

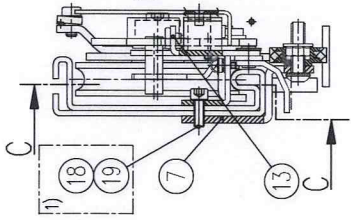
G01/G11/G21

gezeichnet: Standard
drawn: standard

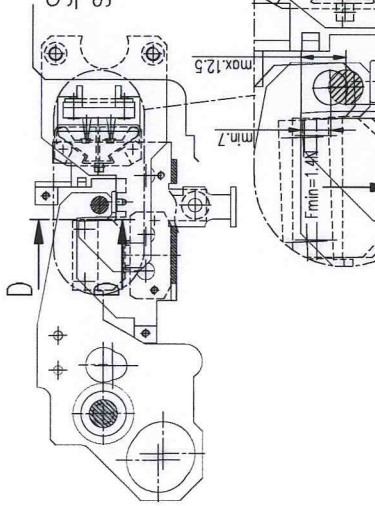
2.12.2010



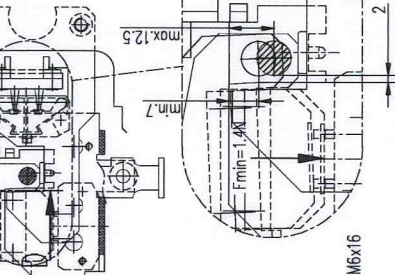
Schnitt A-A
section A-A
AMD R2



Schnitt A-A
section A-A
AMD R6



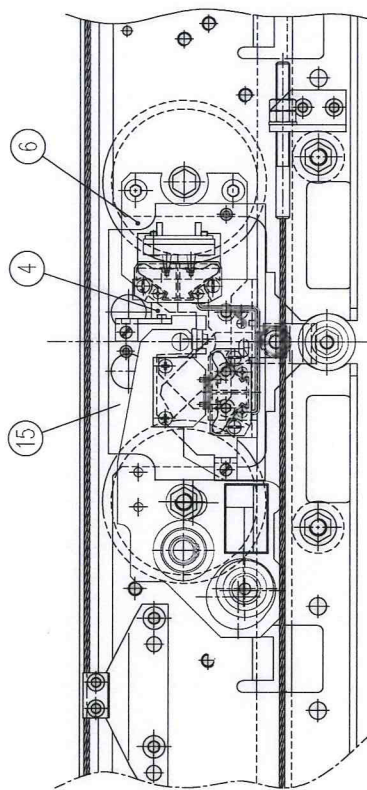
Schnitt C-C
section C-C



1) optional 983583 thread rolling screw with ratchets ~DIN 7500-EE-M6x16

G02/G12/G22

Schnitt B-B
section B-B



Schnitt D-D
section D-D
min. hook cross section
A=74,8mm²

contact plug Version	G12	601070 G08
	G11	601070 G07
	G02/G22	601070 G02
	G01/G21	601070 G01
	VAR. LATCH	

H11 VAR. CONTACT PLUG	(incl. in contact AZ06T)	274094	PO-Bet.	274094	PO-Bet.	
H10 VAR. DOOR CONTACT	263802	AZ06T spez.2158	274095	SEL2-A17 P	280101	SEL5-A17 P
H09 VAR. DOOR CONTACT	254995	AZ05K1 spez.1897	274099	SEL2-A17 PL	280099	SEL5-A17 PL
H08 VAR. CABLE BRIDGE				601110 H04	601110 H04	Bernstein
				601110 H01		Bernstein
						Schmersal

1	1	1	1	1	H27	965669	thread roll. screw DIN7500-C-M4x8-8.8-A20
2	2	2	2	2	H26	408044	contact washer 08-550821-32/Nomel
1	1	1	1	1	H25		distance
6	6	6	6	6	H24		buffer
1	1	1	1	1	H23	201889	tooth washer DIN6798-A4.3-A3C
2	2	2	2	2	H22	257461	hexagon socket screw DIN912-M4x10-8.8-A3G
1	1	1	1	1	H21	281156	thread roll. screw M8x12 DIN7500-D
3	3	3	3	3	H20	104489	retaining ring DIN 471-12x1
1	1	1	1	1	H19	408029	Schnorr safety washer M06
3	3	3	3	3	H18	268146	thread roll. screw DIN7500-E-M6x16-8.8-A3C
1	1	1	1	1	H17	408030	Schnorr safety washer M08
1	1	1	1	1	H16	274886	thread roll. screw M8x25 DIN7500 head DIN7984
-	-	-	-	-	H15	601084 G02	cover
1	1	1	1	1	H14	601084 G01	cover
1	1	1	1	1	H13	601008 H01	buffer
1	1	1	1	1	H12	605391 H01	type label
1	1	1	1	1	H11		CONTACT PLUG
1	1	2	2	2	H10		DOOR CONTACT
1	1	1	1	1	H09		DOOR CONTACT
1	1	1	1	1	H08		CABLE BRIDGE
1	1	1	1	1	H07	601078 G01	buffer fixing
1	1	1	1	1	H06	601079 H02	additional latch
-	-	-	-	-	H05	601079 H01	additional latch
1	1	1	1	1	H04	601073 H02	locking notch
1	1	1	1	1	H03	601073 H01	locking notch
1	1	1	1	1	H02	601208 H01	thread plate
1	1	1	1	1	H01		LATCH
G22	G21	G12	G11	G02	G01		VAR. LATCH

KONE

601029

COPY ORIGINAL



EC DECLARATION OF CONFORMITY



THE MANUFACTURER (°)

- WITTUR-6 WITTUR GmbH, Sowitschstraße 1, A-3270 Scheibbs
 - WITTUR-7 WITTUR s.r.o., Priemyselná ulica 2747/7, SK-96301 Krupina
 - WITTUR-4 WITTUR ELEVATOR COMPONENTS (Suzhou) Co. Ltd. – N° 18 Shexing Road, Beishe Town, Wujiang, Jiangsu Province, CN – 215214
(EU Mandatory: WITTUR GmbH, Sowitschstraße 1, A-3270 Scheibbs)
- (°) - see the name indicated on the Product identification label

STATES

hereby that the following safety component:

- Description: **Landing door locking device for horizontally sliding doors**
- Type: **AMDL1-R6**
- Serial Number and Manufacturing Year: **see the product identification label**

and to which this declaration refers, is manufactured

IN COMPLIANCE WITH

what follows:

Referring directives or standards	EC Type Examination Certificate		
	Number	Notified body for issuing the certificate	Notified body for manufacturing controls
<ul style="list-style-type: none"> - Directive 95/16/EC - Edition June 29, 1995 - European Standard EN 81-1: 1998 - European Standard EN 81-2: 1998 	TÜV-A-AT-1/09/049 CETV/1	TÜV Österreich Krugerstraße 16 A-1015 Wien, Austria ID No. 0408	WITTUR 6 & 7: TÜV Österreich Krugerstraße 16 A-1015 Wien, Austria ID No. 0408 WITTUR-4: TÜV SÜD Industrie Service GmbH Westendstraße 199, D-80686 München ID No. 0036

We also state the conformity of above said safety component with the corresponding EC Type Examination Certificate.

The authorized responsible:

For WITTUR-6, WITTUR-7 & WITTUR-4

Andreas Zwerger

i.v. 11/10 Joh. Zwerger