

CERTIFICAT

CERTIFICADO

‘ΕΡΤΗΓΓΡΑΦ

認証証書

CERTIFICATE

ZERTIFIKAT

EC type-examination certificate



Certificate no.: AFV 398/1

Notified body: TÜV Süddeutschland Bau und Betrieb GmbH
Zertifizierungsstelle
für Aufzüge und Sicherheitsbauteile
Westendstraße 199, D-80686 München

**Applicant/
Certificate holder:** Technolift s.r.l.
Via Enrico Fermi, 7
38015 LAVIS – TRENTO
ITALIA

Date of submission: 2003-01-14

Manufacturer: Technolift s.r.l.
Via Enrico Fermi, 7
38015 LAVIS – TRENTO
ITALIA

Product, type: Instantaneous safety gear, type SH 4

Test Laboratory: TÜV Süddeutschland Bau und Betrieb GmbH
Abteilung Aufzüge und Sicherheitsbauteile
Westendstraße 199, D-80686 München

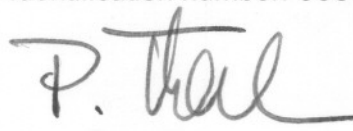
**Date and
Number of test report:** 2003-01-24
398/1

EC-directive: 95 / 16 / EC

Statement: The safety component conforms to the directive's
safety requirements for the respective scope of appli-
cation stated on page 1 of the annex to this EC type-
examination certificate.

Certificate date: 2003-01-24

Zertifizierungsstelle für Aufzüge und Sicherheitsbauteile
EC-Identification number: 0036


Peter Tkalec



Annex to the EC type-examination certificate No. AFV 398/1 dated 2003-01-24

1. Scope of Application

- 1.1 Permissible total mass of car and rated load or counterweight in using one pair of safety gears, depends on maximum tripping speed of the overspeed governor and the blade width of guide rails

Tripping speed (m/s)	Maximum total mass (kg)	
	Blade width 8 mm	Blade width 9 - 10 mm
0,50	2148	2347
0,60	2067	2258
0,70	1979	2162
0,80	1885	2060
0,90	1790	1956
1,00	1694	1851
1,10	1600	1748
1,20	1507	1647
1,32	1402	1532
1,65	1141	1247

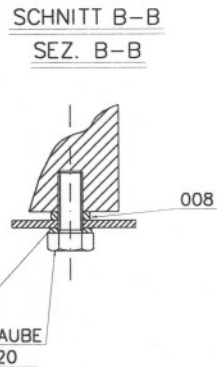
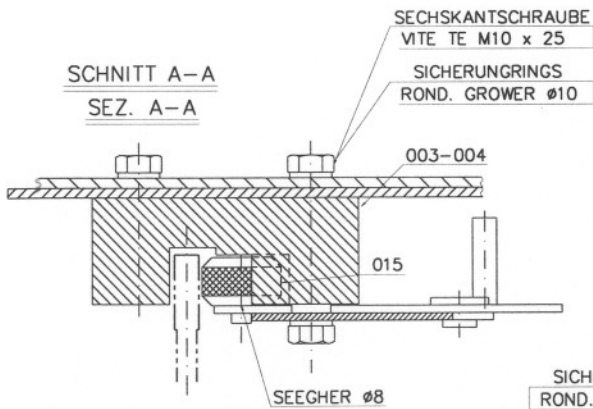
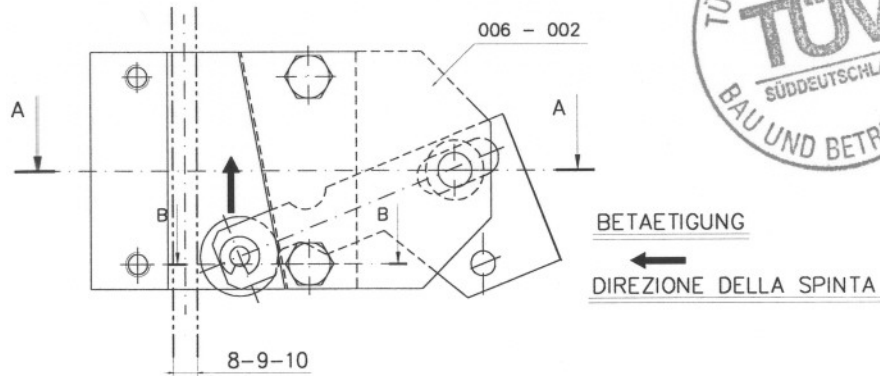
- 1.2 Maximum rated speed
- 1.2.1 Car 0,63 m/s
- 1.2.2 Counterweight 1,00 m/s
- 1.3 Maximum tripping speed of overspeed governor
- 1.3.1 Car 1,00 m/s
- 1.3.2 Counterweight 1,65 m/s
- 1.4. Minimum running surface width of guide rails 25 mm

2. Remarks

- 2.1 The test over covers the safety gear und the safety gear elements (rollers) and did not include either the connection between the individual safety gear elements (safety gear rods) or the actuation of the electric safety device. When connecting the safety gear elements to the overspeed governor, attention must be paid to the fact that, at the point at which the overspeed governor rope engages, the car don't travel more than 0,03 m until the safety gear element engage.
- 2.2 In order to provide identification and information about the basic design and its functioning and to show the environmental conditions and connection requirements pertaining to the tested and approved type, and to define which parts have been tested, drawing No. A 001 - 002 dated 23 January 2003 is to be enclosed with the EC type-examination certificate and the annex thereto.
- 2.3 The EC type-examination certificate may only be used in connection with the pertinent annex.

LOESUNGSMOEGELICHKEIT : 1

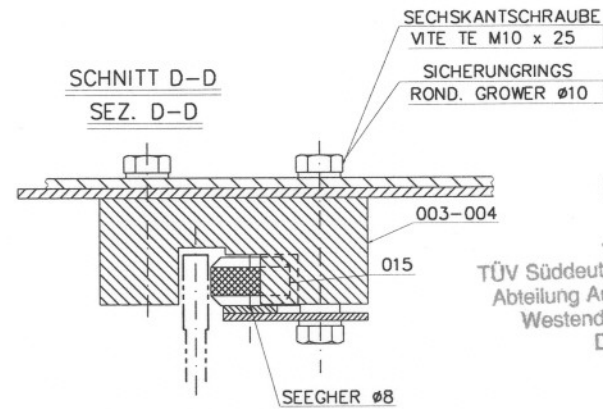
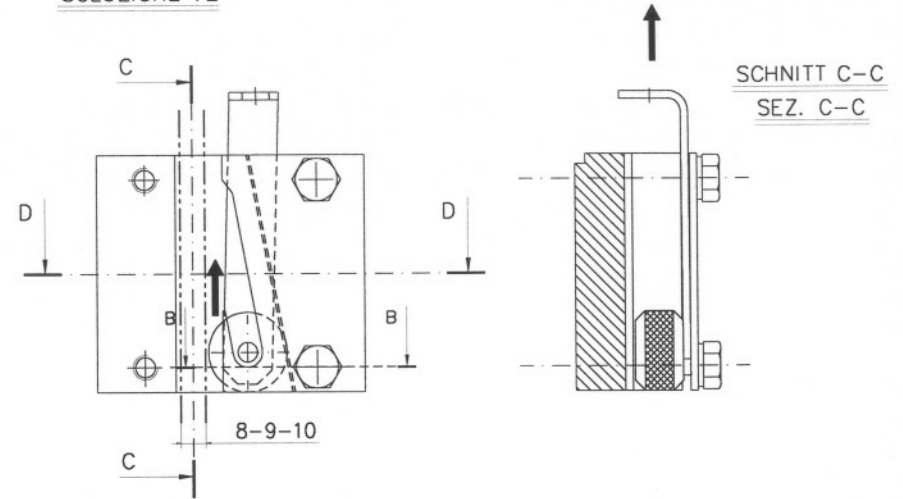
SOLUZIONE : 1



LOESUNGSMOEGELICHKEIT : 2

SOLUZIONE : 2

BETAETIGUNG
DIREZIONE DELLA SPINTA



24. JAN. 2003

- GEPRÜFT -
TÜV Süddeutschland Bau und Betrieb GmbH
Abteilung Aufzüge und Sicherheitsbauteile
Westendstr. 198, D 80686 München
Der Sachverständige

(*)ZUSAMMENSTELUNG ZEICHNUNG FANGVORRICHTUNG TYPE SH4 KOPFDICKE
FUER FUEHRUNGSSCHIENE 8-9-10 mm

IL DISEGNO RAPPRESENTA L'ASSIEME SX. L'ASSIEME DX E' SIMMETRICO
LINKSAUSFUEHRUNG GEZEICHNET .RECHTSAUSFUEHRUNG SPIEGELBILDICH

ESECUZIONE	AUSFUEHRUNG	CODICE PEZZO-TEIL NUMMER	MATERIAL
A DISEGNO	GEZEICHNET	A 202	
SIMMETRICA	SPIEGELBILD	A 201	

Materiale: VEDI PARTICOLARE				 LAVIS - TRENTO
Compilato: VILLOTTI		Data: 23.01.03	Peso:	
Approvato:		Data:		
MODIFICHE:	N.	Data	Descrizione della modifica	Approvato
Descrizione: (*) ASSIEME PARACADUTE TIPO SH4 PER GUIDE sp. "8-9-10" mm				
Edizione: 1.0			Codice:	
Scala: 1:2		Quantità: A201-202		
<small>La ditta si riserva il diritto di legge la proprietà di questo disegno con divieto di riproduzione o di vendita comunque fatta e con il diritto conservarsi senza autorizzazione scritta.</small>				