



Industrie Service

# EC TYPE-EXAMINATION CERTIFICATE

According to Annex V, Part A of 95/16/EC Directive

**Certificate No.:** AFV 015/8

**Certification Body of the Notified Body:** TÜV SÜD Industrie Service GmbH  
Westendstr. 199  
80686 Munich – Germany  
Identification No. 0036

**Certificate Holder:** INVENTIO AG  
Seestrasse 55  
6052 Hergiswil – Switzerland

**Manufacturer of the Test Sample:** Schindler Drive Systems  
Poligono "Empresarium"  
Albardin, 58  
50720 La Cartuja Baja – Zaragoza – Spain  
(Manufacturer of Serial Production - see Enclosure)

**Product:** Progressive safety gear

**Type:** SA G 11  
ID-Nr.: 108321

**Directive:** 95/16/EC

**Reference Standards:** EN 81-20:2014  
EN 81-50:2014  
EN 81-1:1998+A3:2009  
EN 81-2:1998+A3:2009

**Test report:** AFV 015/8 of 2015-07-31

**Outcome:** The safety component conforms to the essential health and safety requirements of the mentioned Directive as long as the requirements of the annex of this certificate are kept.

**Date of Issue:** 2015-08-03

*Werner Rau*  
Werner Rau

Certification Body "lifts and cranes"



**Annex to the EC type-examination certificate  
no. AFV 015/8 dated 2015-08-03**



Industrie Service

**1 Scope of application**

1.1 Permissible total mass of car and rated load or counterweight in using one pair of safety gears, depends on the maximum tripping speed of overspeed governor and condition of the guide rail running surface

Max. tripping speed (m/s)	Condition of the running surface	Total mass (kg) min. - max.
3.7	oiled*	2073
3.3	oiled*	2073 - 6352
2.8	oiled*	2073 - 8045
10.6	dry	2073 - 5031
6.4	dry	2073 - 5619
5.2	dry	2073 - 7256
2.8	dry	2073 - 8045

\*HLP-oils according to DIN 51524, part 2 or oils with comparable characteristics

The total mass corresponding of the intermediate values of the maximum tripping speed can be determined through linear interpolation.

1.2 Maximum tripping speed of overspeed governor and maximum rated speed

Maximum tripping speed (m/s)	2.8	3.3	3.7	5.2	6.4	10.6
Range of the maximum rated speed (m/s)	2.24 - 2.43	2.64 - 2.87	3.0 - 3.2	4.16 - 4.52	5.12 - 5.57	8.45 - 9.22

1.3 Guide rails to be used

- 1.3.1 Running surface manufactured by machined
- 1.3.2 Minimum running surface width 30 mm
- 1.3.3 Blade width 15.88 - 19 mm

**2 Conditions**

- 2.1 For identification and information about the principal construction and operation and for demarcation of the examined and approved sample the identification drawing M \_ \_ 103772 with certification stamp dated 2015-08-03 has to be enclosed to the EC type-examination certificate and its annex.
- 2.2 The EC type-examination certificate may only be used in connection with the pertinent annex and the enclosure (list of the manufacturers serial production). This enclosure shall be updated and re-edited following information of the certificate holder.

**3 Remarks**

- 3.1 Pursuant to the standard EN 81-50:2014, paragraph 5.3.4, the total mass of the progressive safety gear determined for adjustment purposes may be 7.5 % higher or lower.
- 3.2 This EC type-examination certificate is based modelled after and /or harmonized standards as following:
  - EN 81-1:1998 + A3:2009 (D), Anhang F.3
  - EN 81-2:1998 + A3:2009 (D), Anhang F.3
  - EN 81-20:2014 (D), Punkt 5.6.2.1.1.2
  - EN 81-50:2014 (D), Punkt 5.3
- 3.3 Changes resp. extensions of the upper mentioned standards or a further development of the state of the art may make a revision of this EC type-examination certificate necessary.

**Note:** The English text is a translation of the German original. In case of any discrepancy, the German version is valid only.

**Enclosure of EC type-examination certificate  
no. AFV 015/8 dated 2015-08-03**



Industrie Service

**Manufacturer serial production – production sites (Stated: 2015-08-03):**

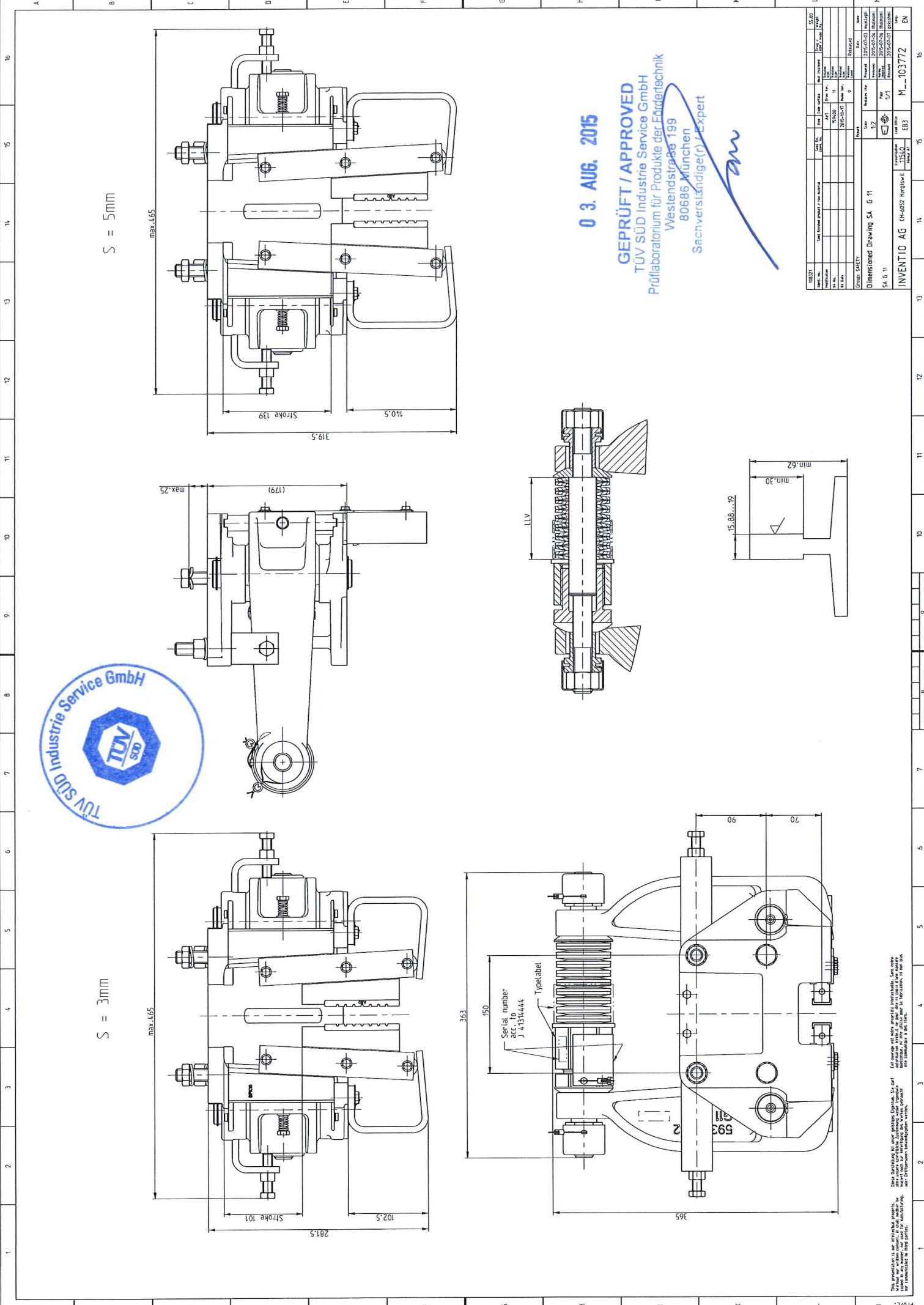
**Company**      **Schindler Drive Systems**  
**Address**      Poligono “Empresarium”  
                    Albardin 58  
                    50720 La Cartuja Baja – Zaragoza - Spain

**Company**      **Schindler (China) Elevator Co. Ltd.**  
**Address**      No. 818 Jin Men Road  
                    215004 Suzhou – P.R. China

**Company**      **Schindler Aufzüge AG**  
                    EBI WORKS  
**Address**      Zugerstrasse 13  
                    6030 Ebikon – Switzerland

- ENDE DOKUMENT -

Base: Letter of SCHINDLER Aufzüge AG dated 28.01.2015

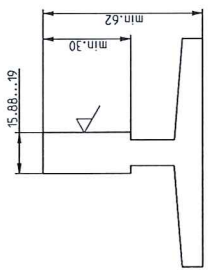
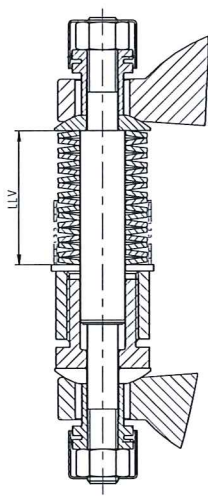
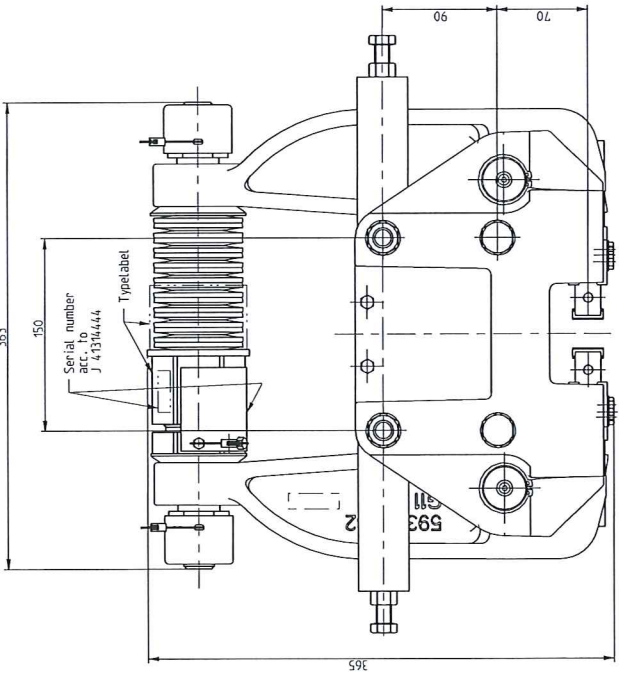


S = 3mm

S = 5mm

0 3. AUG. 2015

**GEPRÜFT / APPROVED**  
TÜV SÜD Industrie Service GmbH  
Prüflaborium für Produkte der Erdertechnik  
Westendstraße 199  
80686 München  
Sachverständige(n)/Expert



Date		Drawn	Checked	Design	Material	Scale
03.08.15	15.08	15.08	15.08	15.08	15.08	15.08

Group	SAFETY	MECHANICAL	ELECTRICAL	OTHER
01	15.08	15.08	15.08	15.08

Group	SAFETY	MECHANICAL	ELECTRICAL	OTHER
01	15.08	15.08	15.08	15.08

Group	SAFETY	MECHANICAL	ELECTRICAL	OTHER
01	15.08	15.08	15.08	15.08

Group	SAFETY	MECHANICAL	ELECTRICAL	OTHER
01	15.08	15.08	15.08	15.08

Group	SAFETY	MECHANICAL	ELECTRICAL	OTHER
01	15.08	15.08	15.08	15.08

Group	SAFETY	MECHANICAL	ELECTRICAL	OTHER
01	15.08	15.08	15.08	15.08

Group	SAFETY	MECHANICAL	ELECTRICAL	OTHER
01	15.08	15.08	15.08	15.08

Dimensioned Drawing SA 6 11

SA 6 11

INVENTIO AG CH-8052 Regenolden  
M...103772

This preparation is based on the original. The accuracy of the drawing is not guaranteed. The drawing is only valid for the purpose of identification and is not a substitute for the original. The drawing is only valid for the purpose of identification and is not a substitute for the original. The drawing is only valid for the purpose of identification and is not a substitute for the original.