

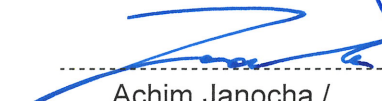


Industrie Service

EU-TYPE EXAMINATION CERTIFICATE

According to Annex IV, Part A of Directive 2014/33/EU

Certificate No.:	EU-OG 180
Certification Body of the Notified Body:	TÜV SÜD Industrie Service GmbH Westendstr. 199 80686 Munich – Germany Identification No. 0036
Certificate Holder:	INVENTIO AG Seestrasse 55 6052 Hergiswil – Switzerland
Manufacturer of the Test Sample: (Manufacturer of Serial Production - see Enclosure)	Schindler Drive Systems Poligono “Empresarium” Albardin, 58 50720 La Cartuja Baja - Zaragoza – Spain
Product:	Overspeed governor
Type:	SA GBD 202 ID-Nr.: 59344300
Directive:	2014/33/EU
Reference Standards:	EN 81-20:2014 EN 81-50:2014
Test report:	No. EU-OG 180 of 2017-12-20
Outcome:	The safety component conforms to the essential health and safety requirements of the mentioned Directive as long as the requirements of the annex of this EU-type examination certificate are kept.
Date of Issue:	2017-12-20


 Achim Janocha /
 Certification Body “lifts and cranes”



**Annex to the EU-Type Examination Certificate
No. EU-OG 180 dated 2017-12-20**



Industrie Service

1 Scope of application

1.1	Permissible tripping speed	0.70 – 2.35 m/s
1.2	Permissible rated speed	≤ 2.04 m/s
1.3	Driving rope	
1.3.1	Type	Round strand rope made of steel wire
1.3.2	Diameter	6 – 6.5 mm
1.4	Minimum tension force (force produced by the tensioning weight, acting on the axle of pulley)	720 N
1.5	Tensile force determined in the test (new rope and groove) at existing tensioning force	
1.5.1	In downwards direction	1568 N
1.5.2	In upwards direction	335 N

2 Conditions

- 2.1 The adjusted tripping speeds must be sealed against unauthorised adjustment.
- 2.2 Retraction of the safety gear in both directions of rotation permissible.
- 2.3 Deflection of rope way is optional, tensile force with rope way with 90° turned against normal direction (laterally to the right or left) must not exceed 4000 N, and tensile force with rope way with 180° turned against normal direction (upward) must not exceed 6000 N. The mass of the tensioning weight is to be determined accordingly.
- 2.4 Design with and without remote release possible.
- 2.5 For identification and information about the principal construction and operation and for demarcation of the examined and approved sample the identification drawing M __ 41344300 with certification stamp dated 2015-07-17 has to be enclosed to the EU-type examination certificate and its annex.
- 2.6 The EU-type examination certificate may only be used in connection with the pertinent annex and the enclosure (list of the manufacturers serial production). This enclosure shall be updated and re-edited following information of the certificate holder.

3 Remarks

- 3.1 The overspeed governor can be used as a part of the protection device against overspeed for the car moving in upwards direction. Monitoring of upward speed will be done by overspeed governor itself and a braking device can be triggered (engaged) via the overspeed governor's electric safety device or mechanically.
- 3.2 This EU-type examination certificate is based modelled after and /or harmonized standards as following:
 - EN 81-1:1998 + A3:2009 (D), Annex F.4
 - EN 81-2:1998 + A3:2009 (D), Annex F.4
 - EN 81-20:2014 (D), point 5.6.2.2.1.1 b), point 5.6.2.2.1.2, point 5.6.2.2.1.7
 - EN 81-50:2014 (D), point 5.4
- 3.3 Changes resp. extensions of the upper mentioned standards or a further development of the state of the art may make a revision of this EU-type examination certificate necessary.

Enclosure of EU-Type Examination Certificate
No. EU-OG 180 dated 2017-12-20



Industrie Service

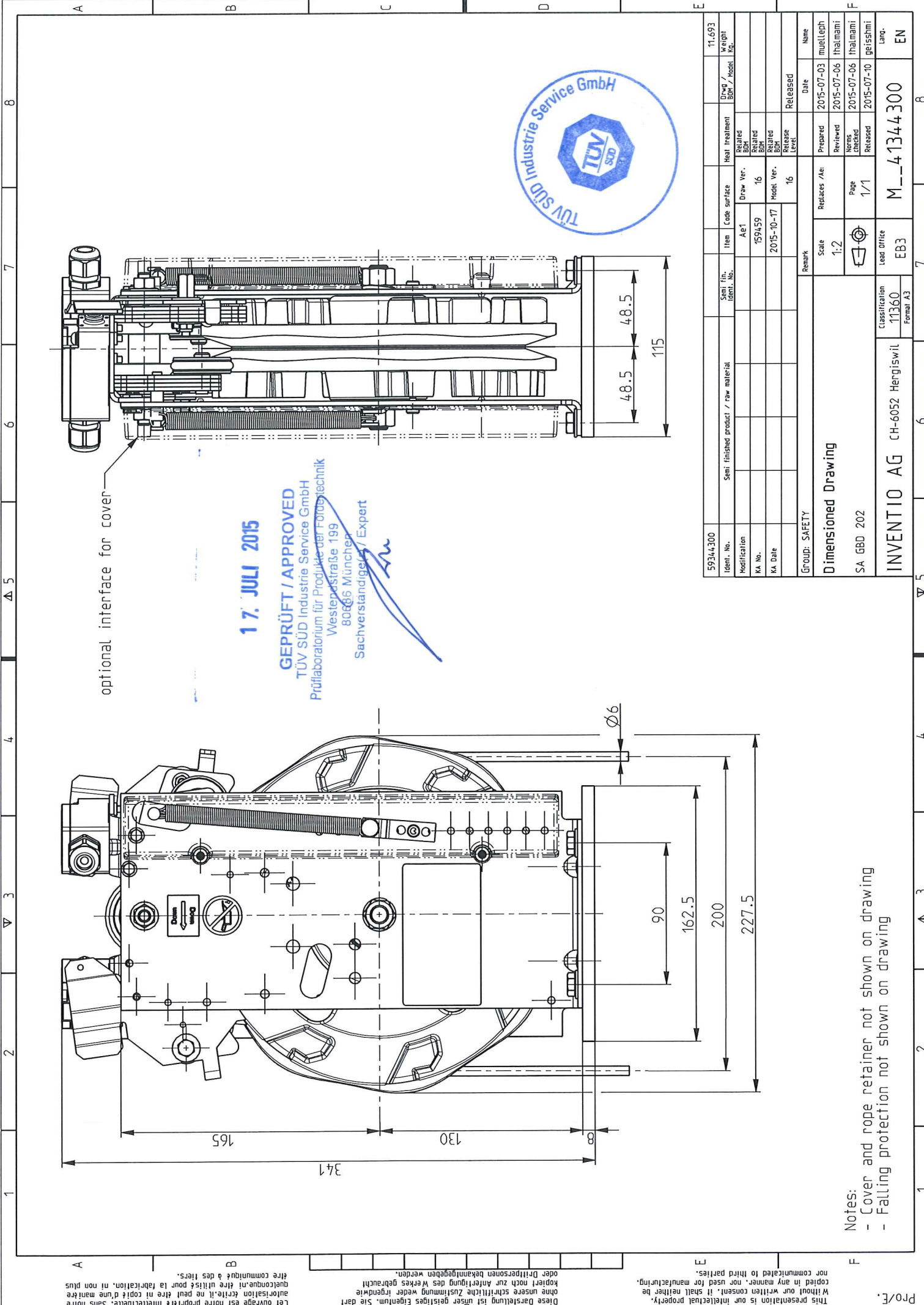
Authorised Manufacturer of Serial Production – Production Sites (Stated: 2017-12-20):

Company Schindler Drive Systems
Address Poligono "Empresarium"
Albardin 58
50720 La Cartuja Baja - Zaragoza – Spain

Company Schindler (China) Elevator Co. Ltd.
Address No. 818 Jin Men Road
Suzhou 215004 – P.R. China

Company Elevadores Atlas Schindler S. A.
Address R. Angelina Ricci Vezozzo, 3400
86087 Londrina – Brasil

- ENDE DOKUMENT -



optional interface for cover

17. JULI 2015

GEPRÜFT / APPROVED
 TÜV SÜD Industrie Service GmbH
 Prüflaboratorium für Produkte der Foto- und Technik
 Weststeppstraße 199
 80866 München
 Sachverständiger / Expert



- Notes:
- Cover and rope retainer not shown on drawing
 - Falling protection not shown on drawing

59344300	Ident. No.	Semi finished product / raw material	Item	Code surface	Heat treatment	Drawg. / Modif. / Kgt.	11.693
	Modification		AE1	Draw Ver.	Related BOM		
	KA No.		159459	16	Related BOM		
	KA Date		2015-10-17	Model Ver.	Released BOM		
				16	Release Level		
GROUP: SAFETY							
Dimensioned Drawing							
SA GBD 202							
INVENTIO AG CH-6052 Hergiswil							
Classification 11360							
Formal A3							
Lead Office EB3							
M__41344300							
Lang. EN							

This presentation is our intellectual property. Without our written consent, it shall neither be copied nor used for manufacturing. This drawing is our intellectual property. Without our written consent, it shall neither be copied nor used for manufacturing. Diese Darstellung ist unser geistiges Eigentum. Sie darf ohne unsere schriftliche Zustimmung weder gedruckt oder in irgendeiner Weise weitergegeben werden. L'ouvrage est notre propriété intellectuelle. Sans notre autorisation écrite, il ne peut être ni copié d'une manière quelconque ni être utilisé pour la fabrication, ni non plus être communiqué à des tiers. oder Dritten Personen bekanntgegeben werden.