



EU TYPE-EXAMINATION CERTIFICATE

According to Annex IV, Part A of 2014/33/EU Directive

Certificate No.: EU-OG 208

Certification Body of the Notified Body: TÜV SÜD Industrie Service GmbH
Westendstr. 199
80686 Munich – Germany
Identification No. 0036

Certificate Holder: INVENTIO AG
Seestrasse 55
6052 Hergiswil – Switzerland

Manufacturer of the Test Sample: Schindler Drive Systems
Poligono „Empresarium“
Albardin, 58
50720 La Cartuja Baja - Zaragoza – Spain
(Manufacturer of Serial Production – see Enclosure)

Product: Overspeed governor, detecting and tripping element fixed at the overspeed governor, as a part of the protection device against overspeed for the car moving in upwards direction

Type: SA GB 42
ID-Nr.: 188466

Directive: 2014/33/EU

Reference Standards: EN 81-20:2014
EN 81-50:2014

Test Report: EU-OG 208 of 2017-05-31

Outcome: The safety component conforms to the essential health and safety requirements of the mentioned Directive as long as the requirements of the annex of this certificate are kept.

Date of Issue: 2017-12-04


Achim Janocha

Certification Body "lifts and cranes"



1 Scope of application

1.1 Generally

1.1.1 Driving rope

Category Round strand rope made of steel wire with steel core

Diameter 10 mm

1.1.2 Minimum tensile force

300 N

The safety component can fulfil two security features (1.2 and 1.3).

1.2 Using as an overspeed governor – permissible speeds

Permissible tripping speed 2.8 – 12.5 m/s

Permissible rated speed 2.5 – 10.87 m/s

1.3 Using as a part of the protection device against overspeed for the car moving in upwards direction

The overspeed governor can be used as a part of the protection device against overspeed for the car moving in upwards direction. Monitoring of upward speed will be done by overspeed governor itself and a braking device can be triggered (engaged) via the overspeed governor's electric safety device.

2 Conditions

2.1 Above mentioned safety component represents only a part at the protection device against overspeed for the car moving in upwards direction. Only in combination with a braking component in accordance with the standard, which must be subjected to an own type-examination, can the system created fulfil the requirements for a protection device.

2.2 The adjusted tripping speed and the safety switch must be sealed against unauthorized adjustment (safety switch e.g. by colour sealing of the fastening bolts).

2.3 The direction of rotation for retracting the safety gear is to be marked at the overspeed governor

2.4 The identification drawing No. Z _ _ 273360 with certification stamp dated 2010-11-12 shall be included to the EU type-examination for the identification and information of the general construction and operation and distinctness of the approved type.

2.5 The EU type-examination certificate may only be used in combination with the corresponding annex and enclosure (List of authorized manufacturer of the serial production). The enclosure will be updated immediately after any change by the certification holder.

3 Remarks

3.1 Changes of characteristics in scope of application over time are not covered by this type examination.

3.2 This EU type-examination certificate was issued according to the following standards:

➤ EN 81-20:2014 (D), part 5.6.2.2.1.7 and part 5.6.6.11

➤ EN 81-50:2014 (D), part 5.4 and 5.7

A revision of this EU type-examination certificate is inevitable in case of changes or additions of the above mentioned standards or of changes of state of the art.

**Enclosure to the EU Type-Examination Certificate
No. EU-OG 208 of 2017-12-04**



Industrie Service

Authorised Manufacturer of Serial Production – Production Sites (valid from: 2016-11-23):

Company	Schindler Drive Systems
Address	Poligono „Empresarium“ Albardin 58 50720 La Cartuja Baja – Zaragoza – Spain

- END OF DOCUMENT -

12. Nov. 2010

- GEPRÜFT -
 TÜV SÜD Industrie Service GmbH
 Zentralbereich Fördertechnik-Sonderbauten
 Abteilung Aufzüge und Sicherheitsbauteile
 Westendstr. 199, D-80686 München
 Der Sachverständige

rw

Serial number

Rope must not be relubricated

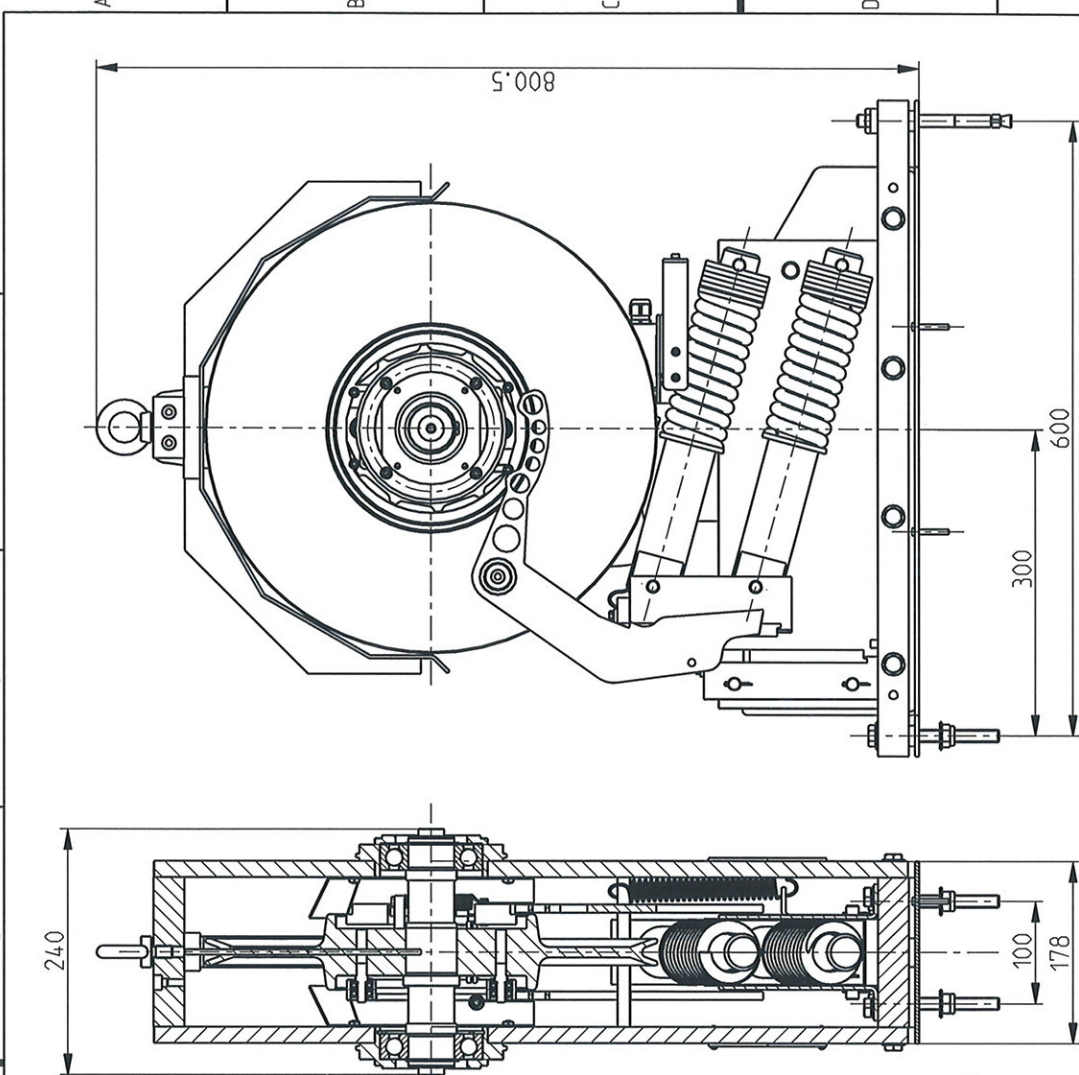
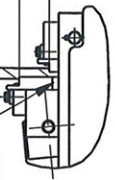
A-A



Wear check dimension

Replace brake lining if wear check dimension <30

Indicator groove



Speed setting according to J 273314

189466	Ident. No.	Semi finished product / raw material	Item	Code surface	Heat treatment	Drawn / BOM / Model	155.200
	Modification		AltG	Draw Ver.	Related BDM		
	KA No.		159125	8	Related BDM		
	KA Date		2010-12-23	Model Ver.	Related BDM		
				Release Level	Release Level		
GROUP: SAFETY							
Remark							
Overspeed governor SA GB 42 TÜV				Scale	Replaces /A:	Prepared	2010-11-09
Identification for EC type-examination certificate				1:5		Reviewed	2010-11-10
						Pages checked	kuensima
						Released	kuensima
						Released	grenzmaui
						Lang.	EN
INVENTIO AG CH-6052 Hengiswil				Classification	Lead Office	Z---273360	
				11360	EB3		
				Format A3			

Cet ouvrage est notre propriété intellectuelle. Sans notre autorisation écrite, il ne peut être ni copié, ni réimprimé, ni communiqué à des tiers.

Diese Darstellung ist unser geistiges Eigentum. Sie darf ohne unsere schriftliche Zustimmung weder reproduziert noch zur Anfertigung des Werkes gebraucht oder Dritten bekanntgegeben werden.

This presentation is our intellectual property. Without our written consent, it shall neither be copied in any manner, nor used for manufacturing, nor communicated to third parties.